



About



Contact



Products

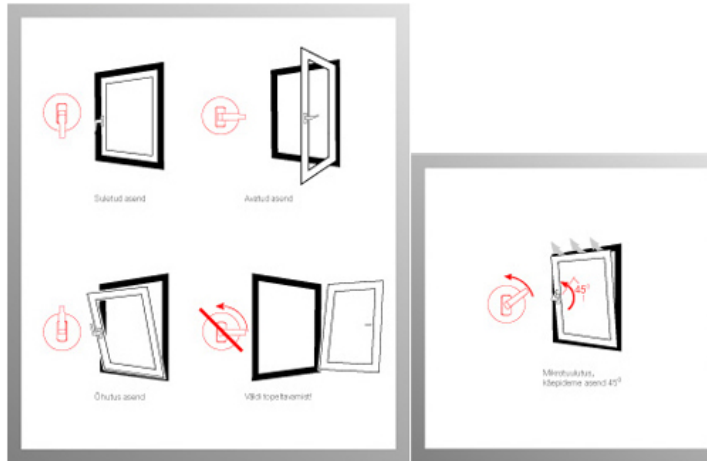
User and maintenance manual for windows

Search

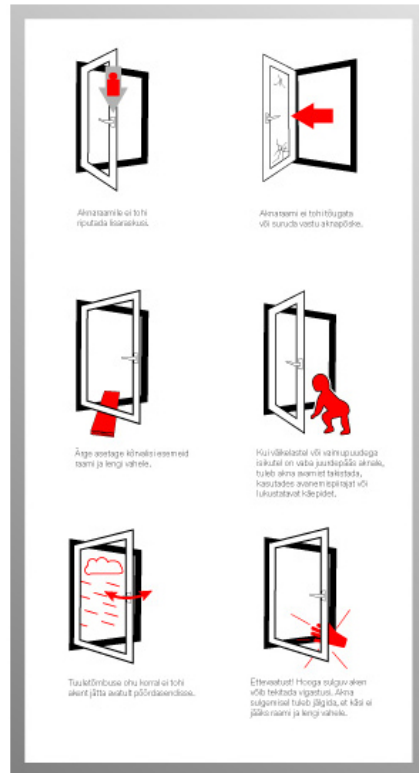
Price inquiry

Window usage

Function of the window handles:



To guarantee the window's longevity and safety, it is important to follow the tips below:



Window maintenance

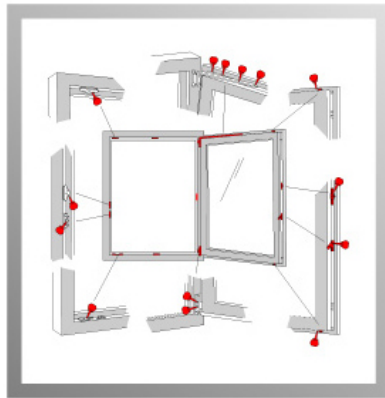
All windows need service at least once a year. The service should include cleaning the windows, cleaning and oiling obstruction system and hinges, regulating window sashes and fasteners. Proper

and safe usage of the window is also important. To guarantee the active, long, and convenient usage of window fasteners, they need to be serviced at least once a year.

- Oil all the moving parts and fasteners.
- For oiling use only oils or lubricants that do not contain any acids or resin.
- In case the window hinges do not have decorative plastic covering, check the presence of fixating/fastening bolt and its locking at the upper hinge.
- For cleaning and servicing use on pH neutral products that do not damage the corrosion protection of the fastenings.
- To guarantee the quality of the window fasteners, we ask you to follow the instructions given in the manual.
- For cleaning the surface of fasteners use silicon and acid-free oils (e.g. sewing machine oil).
- Check screw fastenings. Loose screws need to be refastened and damaged screws need to be replaced by new ones.

NB! Window's functional defects may endanger you safety. In this case we ask you to stop using the window, fasten it in the previous position, and turn to the closest sales office.

On the windows or nearby, it is forbidden to use sealing materials or gaskets containing vinegar or other acids. Contact with these seaming materials or their fumes may harm the exterior surface of the fastenings. In case of any processing – for example, lacquering or applying transparent coat on the windows, all fastenings of doors and door windows need to be protected from the process and against possible staining. We recommend oiling or lubricating window fasteners in the indicated places regularly at least once a year to ensure the effective functioning of the window when opening and closing and to protect the fasteners against premature wearing out.



Barring points that are important for window's safety have to be serviced with special care. In addition, screw fastenings need to be checked. Loose screws need to be refastened and damaged screw heads need to be replaced by new ones. In case of necessity, we recommend consulting with a specialist.

Cleaning the window

Window sash and gaskets need to be cleaned each time you wash the windows. Use soft, non-abrasive cleansing agent (e.g., plastic details of the window must not be cleaned with washing powder). Dusting with a dry cloth causes static electricity. As a result of this, the window gets dirty faster. To avoid the static load, use antistatic. In case of heavy dirt (for example, plaster or mortar waste, etc) remove with wooden or plastic spatula. To clean the water flow openings, the dust and dirt have to be removed from the external surface of window frame and between the gaskets with a vacuum cleaner. Clogged water flow openings can be cleaned with wooden and plastic spat. For gasket maintenance rub them with a grease stick or Vaseline. It helps them to maintain their elasticity and they won't stick.

For fasteners' maintenance a small drop of acid-free oil or a small amount of lubricant will do. They will keep the mechanics easily working and ensure its longevity. The lubricated parts have to have a thin oil layer. To avoid staining, remove excessive lubricant.

It is forbidden to clean the window

- with sharp-edged tools (knives, metal spatulas, steel wool, etc) that may damage window surface
- with aggressive cleaning agents or solvents (nitro solvent, nail polish remover, etc) that cause the permanent damage to the surface of the elements

In addition to regular cleaning, your plastic windows should be inspected every year. This ensures longevity and perfect functioning for your windows.

Regulating the sash

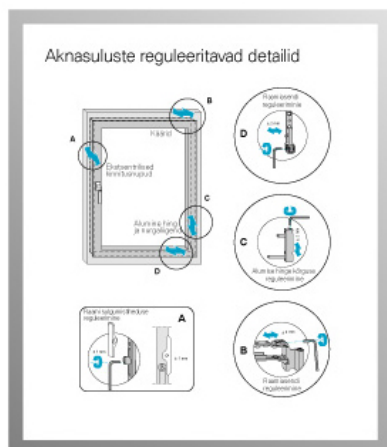
Throughout the years, environmental influences can affect the window mechanics which can lead to poor functioning. The following instruction should help you to do the small regulation works yourself. The handle side of the sash hits the lower frame, this means that the handle side of the sash has fallen and it needs to be raised. For that you need 4mm internal hex key, open window, and regulate the bend hinge (drawing B)

- turn to the right = the sash rises
- turn to the left = the sash is lowered

If necessary, regulate the lower hinge as well (drawing D).

The sash hits the lower frame in full, it means that the sash has fallen and it needs to be raised. For that you need 4mm internal hex key, remove the safety fuse from the lower corner hinge, and regulate the screw in the corner hinge (drawing C)

- turn to the right = the sash rises
- turn to the left = the sash is lowered



HEMA

Järelmaksu ja/või väikelaenu pakub AS LHV Finance, Tutvu tingimustega müügikohas või aadressil lhv.ee/jarelmaks ja küsi nõu meie asjatundjalt.
Näide: Järelmaksu krediidi kulukuse määr on 25,64% aastas järgmistel näidistingimustel: kauba/teenuse maksumus 650 EUR, sissemaks 0%, krediidisumma 650 EUR, intress 19,9% jäägilt aastas (fikseeritud), lepingutasu 19,90 EUR, järelmaksu periood 25 kuud, tasumine igakuiste annuiteetmaksetena, maksete kogusumma 819EUR

© OÜ AKNAKODA 2014